



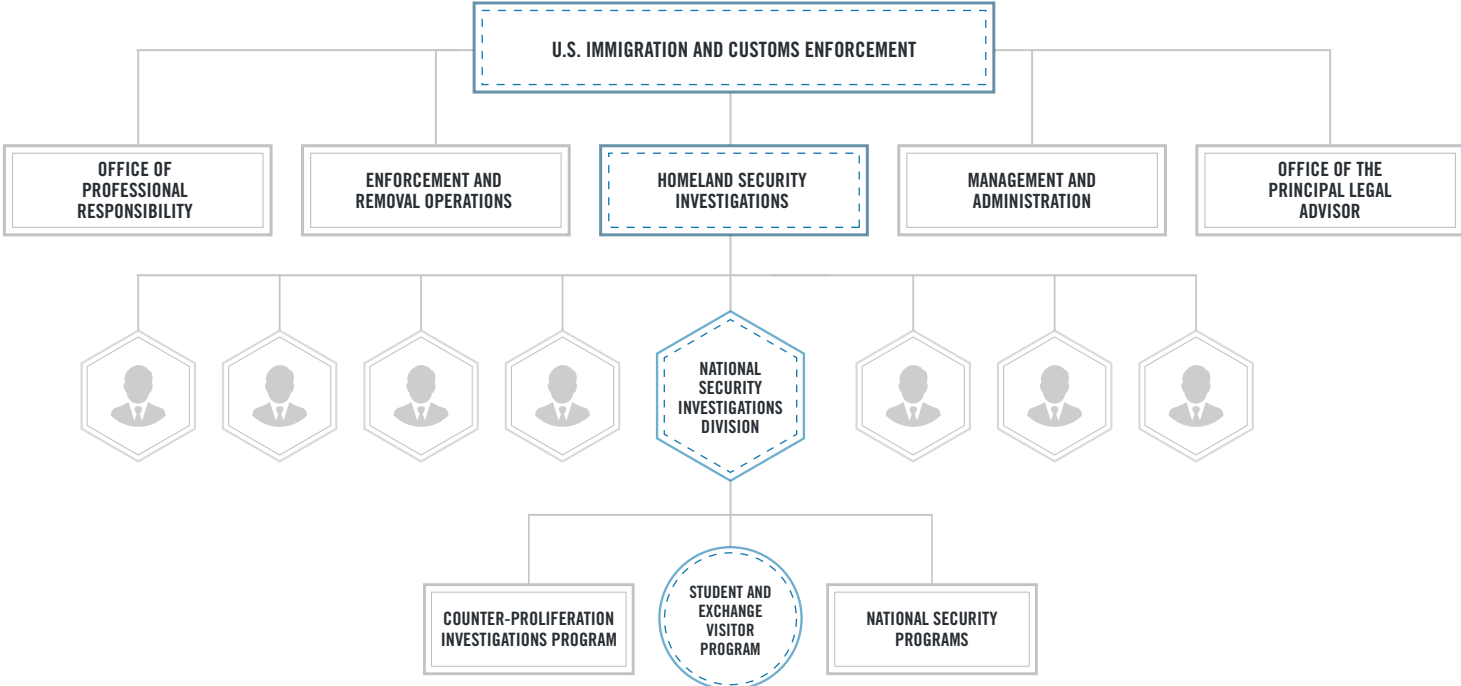
Get to Know

SEVP

STUDENT AND EXCHANGE VISITOR PROGRAM

SEVP MISSION

U.S. Immigration and Customs Enforcement’s (ICE) Student and Exchange Visitor Program (SEVP) provides integrity to the United States immigration system by collecting, maintaining and analyzing information so only legitimate nonimmigrant students or exchange visitors gain entry into the United States. SEVP ensures the institutions accepting nonimmigrant students are certified, and follow the federal rules and regulations that govern them.



INTERNATIONAL STUDENTS AND SCHOOLS

SEVP manages the Student and Exchange Visitor Information System (SEVIS), a web-based information system that maintains and allows monitoring of the following records:

- SEVP-certified schools.
- Exchange visitor program sponsors.
- F-1 and M-1 nonimmigrant students and their dependents.
- J-1 exchange visitors and their dependents.*

SEVP prepares [SEVIS by the Numbers](#), a quarterly report on international student trends. SEVIS data from the latest report, published in December 2016, includes:



**1.23 MILLION
F AND M STUDENTS**
currently study in
the United States.



**198,217 J-1
EXCHANGE VISITORS**
are currently in
the United States.*



8,697 U.S. SCHOOLS
are certified by SEVP
to enroll international
students.



**20,000 U.S. GOVERNMENT
PERSONNEL**
including those from USCIS,
CBP and the Department of
State — use SEVIS.

INTRAGOVERNMENTAL COORDINATION

SEVP works closely with its government partners involved in the international student process, including [U.S. Citizenship and Immigration Services \(USCIS\)](#), [U.S. Customs and Border Protection \(CBP\)](#) and the [U.S. Department of State](#).

Working with partner law enforcement agencies, SEVP administratively enforces federal rules and regulations governing schools certified to enroll F and M nonimmigrant students.

SEVP STAFFING AND FUNDING

SEVP currently employs more than 120 employees. The program also funds federal positions outside of SEVP, including special agents in the field, ICE officers, employees at the U.S. Department of Homeland Security's Office of Academic Engagement, and the Department of State's Bureau of Educational and Cultural Affairs.

SEVP is 100 percent fee funded with no appropriated funds. For fiscal year 2016, SEVP anticipates projected revenue of \$163 million from the following school and student fees:



**F-1 AND M-1
NONIMMIGRANT STUDENTS**
\$200 initial fee.



J-1 EXCHANGE VISITORS
No fee for government-sponsored
participants; \$35 au pair, camp
counselor and summer work travel.*



SCHOOL CERTIFICATION FEES
\$1,700 initial fee; \$655
site visit fee; no charge
for recertification.

*The U.S. Department of State manages exchange visitor programs, nonimmigrant exchange visitors in the J visa classification and their dependents.

CONTACT INFORMATION SEVP Response Center



Contact for general and case-specific questions:
Telephone: 703-603-3400
Email: SEVP@ice.dhs.gov



For more information about SEVP:
Visit: ICE.gov/SEVP